

# Postal Code 78703

# Residential Statistics



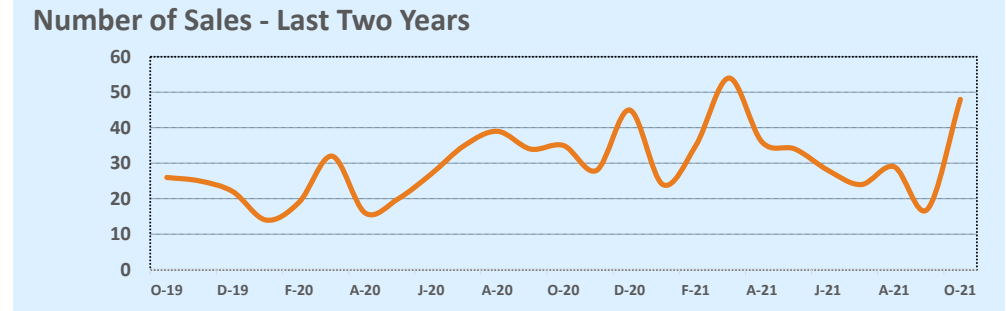
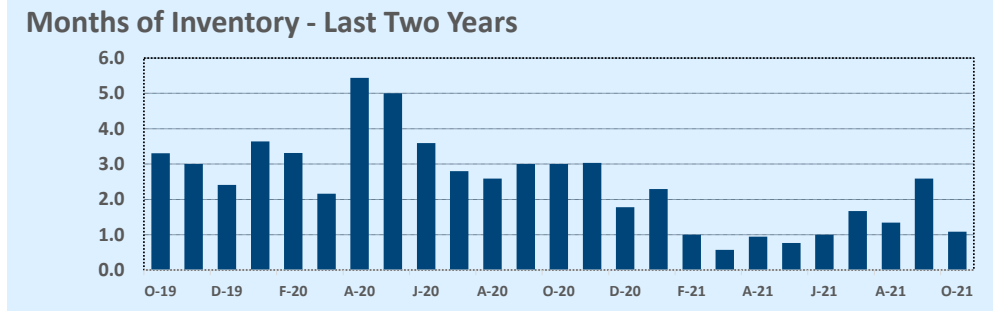
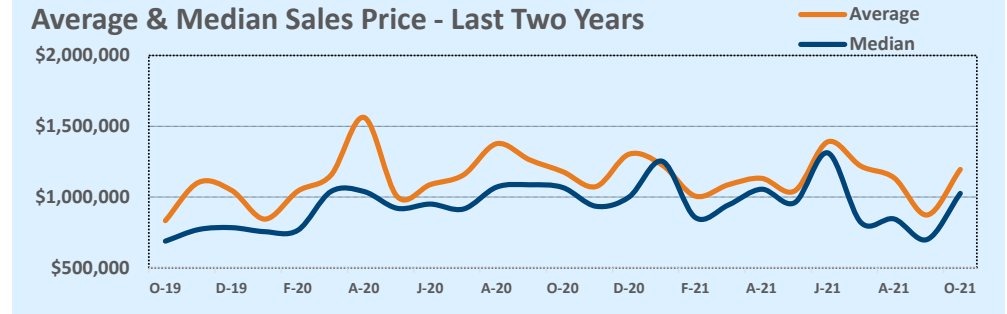
# October 2021

Listings	This Month			Year-to-Date		
	Oct 2021	Oct 2020	Change	2021	2020	Change
Single Family Sales	19	22	-13.6%	162	190	-14.7%
Condo/TH Sales	29	13	+123.1%	167	81	+106.2%
<b>Total Sales</b>	<b>48</b>	<b>35</b>	<b>+37.1%</b>	<b>329</b>	<b>271</b>	<b>+21.4%</b>
New Homes Only	1	3	-66.7%	12	16	-25.0%
Resale Only	47	32	+46.9%	317	255	+24.3%
Sales Volume	\$57,354,197	\$41,257,400	+39.0%	\$372,832,079	\$321,298,962	+16.0%
New Listings	42	46	-8.7%	367	474	-22.6%
Pending	--	--	--	--	--	--
Withdrawn	1	6	-83.3%	16	28	-42.9%
Expired	1	6	-83.3%	16	28	-42.9%
Months of Inventory	1.1	3.0	-63.9%	N/A	N/A	--

Price Range	This Month			Year-to-Date		
	New	Sales	DOM	New	Sales	DOM
\$149,999 or under	--	--	--	1	--	--
\$150,000- \$199,999	--	--	--	1	1	14
\$200,000- \$249,999	--	1	6	2	2	7
\$250,000- \$299,999	--	2	44	12	15	64
\$300,000- \$349,999	--	--	--	5	10	22
\$350,000- \$399,999	1	--	--	28	14	27
\$400,000- \$449,999	1	3	41	14	15	27
\$450,000- \$499,999	1	2	8	13	16	36
\$500,000- \$549,999	1	1	--	4	11	68
\$550,000- \$599,999	--	--	--	8	5	104
\$600,000- \$699,999	--	3	18	11	17	53
\$700,000- \$799,999	4	3	34	24	16	29
\$800,000- \$899,999	2	4	71	20	24	45
\$900,000- \$999,999	2	5	57	27	22	47
\$1M - \$1.99M	16	20	37	129	132	40
\$2M - \$2.99M	6	3	53	38	20	43
\$3M+	8	1	8	30	9	36
<b>Totals</b>	<b>42</b>	<b>48</b>	<b>39</b>	<b>367</b>	<b>329</b>	<b>42</b>

Average	This Month			Year-to-Date		
	Oct 2021	Oct 2020	Change	2021	2020	Change
List Price	\$1,193,925	\$1,222,457	-2.3%	\$1,118,267	\$1,238,433	-9.7%
List Price/SqFt	\$618	\$519	+19.1%	\$577	\$513	+12.7%
Sold Price	\$1,194,879	\$1,178,783	+1.4%	\$1,133,228	\$1,185,605	-4.4%
Sold Price/SqFt	\$623	\$503	+24.0%	\$588	\$497	+18.2%
Sold Price / Orig LP	101.1%	96.9%	+4.3%	101.9%	97.2%	+4.8%
Days on Market	39	46	-14.6%	42	46	-9.4%

Median	This Month			Year-to-Date		
	Oct 2021	Oct 2020	Change	2021	2020	Change
List Price	\$1,037,000	\$1,195,000	-13.2%	\$985,000	\$995,000	-1.0%
List Price/SqFt	\$619	\$511	+21.1%	\$567	\$495	+14.4%
Sold Price	\$1,025,500	\$1,067,000	-3.9%	\$987,000	\$950,000	+3.9%
Sold Price/SqFt	\$615	\$500	+23.1%	\$568	\$481	+18.0%
Sold Price / Orig LP	99.4%	98.2%	+1.2%	100.0%	97.6%	+2.5%
Days on Market	13	30	-56.7%	13	30	-56.7%



Based on information from the Austin Board of REALTORS® (alternatively, from ACTRIS). Neither the Board nor ACTRIS guarantees or is in any way responsible for its accuracy. The Austin Board of REALTORS®, ACTRIS and their affiliates provide the MLS and all content therein "AS IS" and without any warranty, express or implied. Data maintained by the Board or ACTRIS may not reflect all real estate activity in the market.